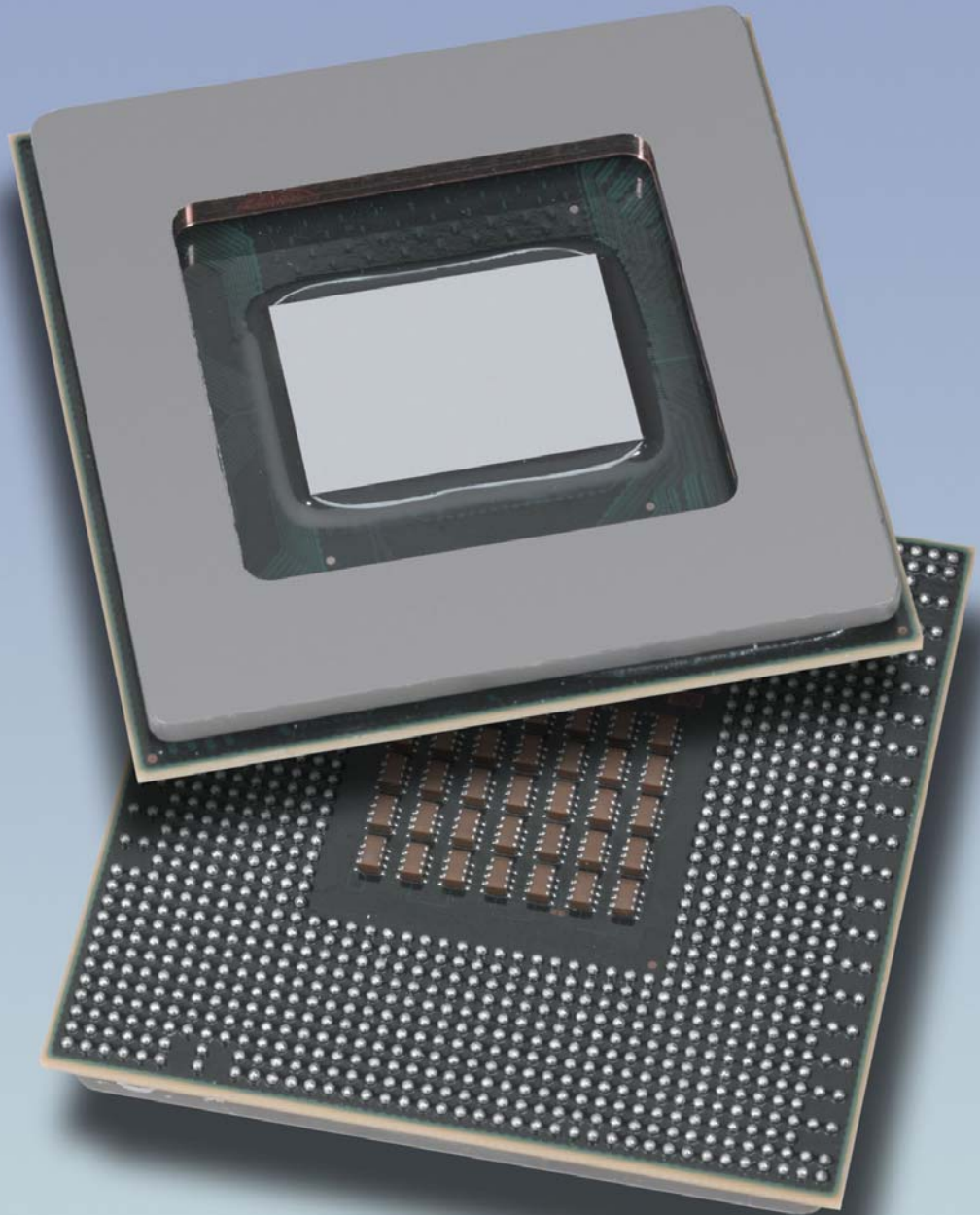
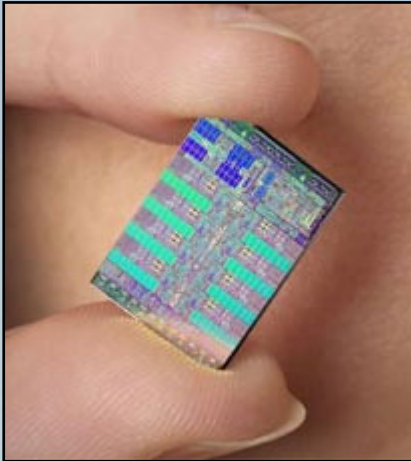
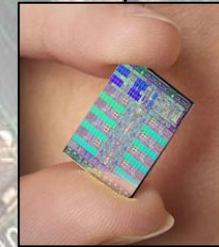
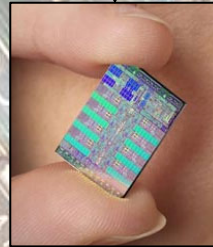
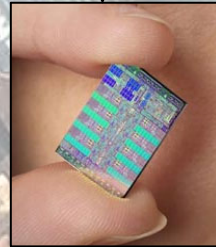
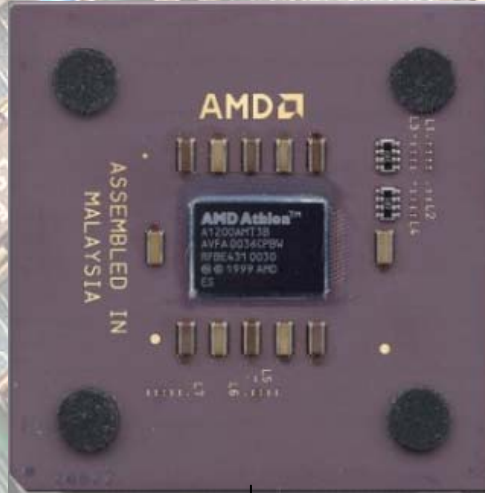


The Cell Processor

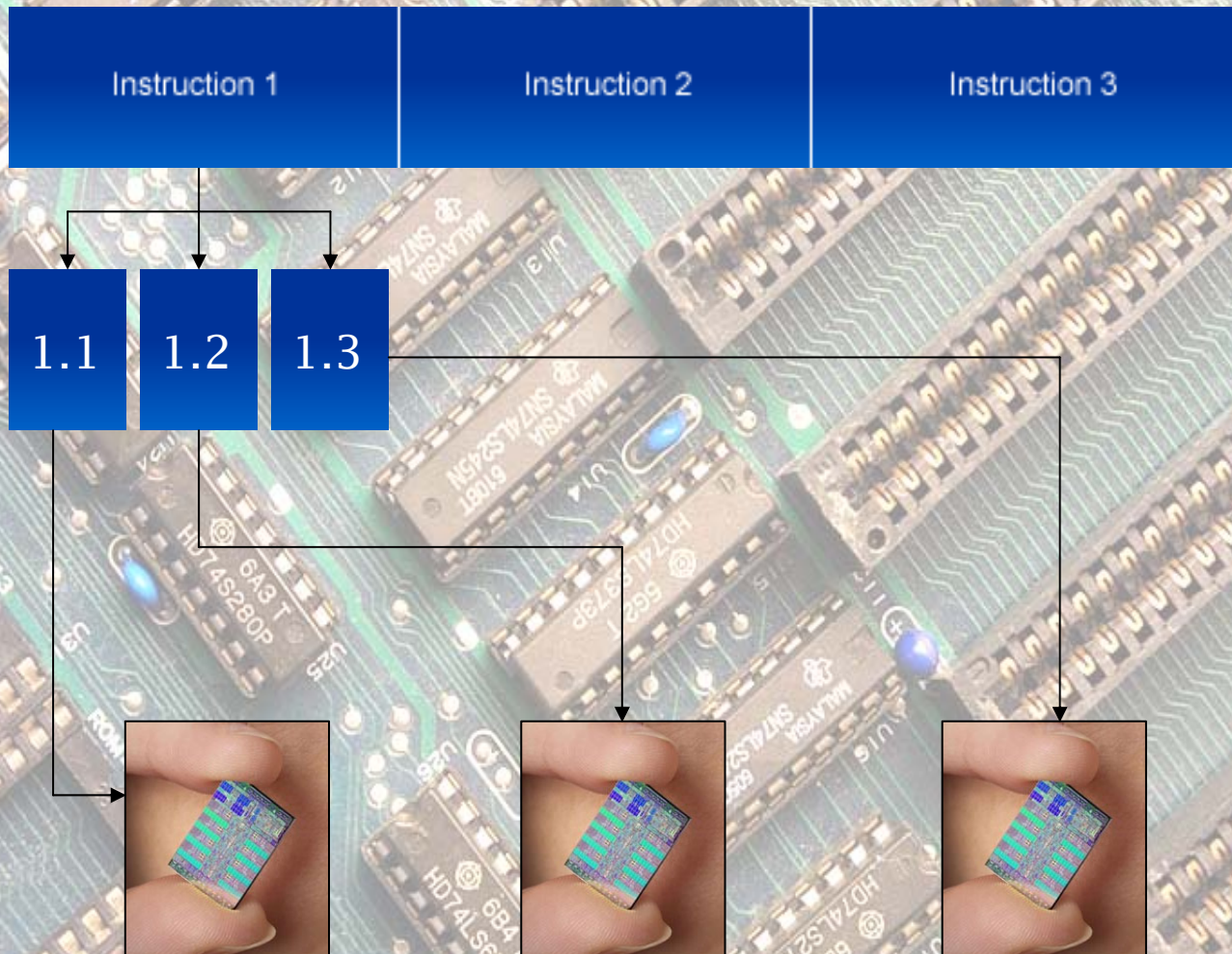
In 2000, **Sony**, **Toshiba** and **IBM** formed an alliance to design and build the next generation in processors.



Current Processors



The current high grade processors available in computers consist of many separate processing units embedded onto 1 chip.



Current multi-core chips typically chop a single computing task into parts, which are distributed among processing units.

Playstation 2

Processor Speed = 294.912MHz

Memory = 32MB

Graphics Processor = 147.456MHz

**Disc Format = Single Layer DVD-ROM
(Hold 4.7GB)**



Playstation 3



Processor = 3.2GHz
(But has successfully been
Tested to run at clock speeds of 5.2GHz)

Memory = 256 MB + 256 MB Graphic

Disc Format = Blu-ray BD-ROM
(Hold 25/50GB)



WORK IN PROGRESS
2K
WORK IN PROGRESS

 **IGN.COM**

Thanks For Watching